

# THE AMERICAN WAY



CHAPTER OF FMCA

VOLUME 16, ISSUE 1, JANUARY, 2010



*"I hope each and every one of you will consider joining the chapter for the summer pre-rally at the beautiful Seven Feathers RV Resort in Canyonville, Oregon."*

## Inside this issue:

Photos from Santa Fe	3
Changes in FMCA Benefits	4
News from Fleetwood	5
Treasure's Report	6
Summer Relish Recipes	7
Canyonville Registration	8,9
Canyonville Service Request	10

## President's Message

*By Chip Aiken*

Greetings to one and all from Merriam, Kansas. I hope everyone is having a wonderful spring wherever you might be. Annette and I left Yuma in March along with Bill Cranford, Annie Piper and Bill Ferguson. Our three-coach caravan headed to Santa Fe for the ACC pre-rally at the Roadrunner RV Park and Cities of Gold Hotel in the Pojoaque (pronounced Po-wah-kay) north of Santa. Not far behind us were Wayne & Betty Nelson who left Yuma just hours after but ended up at the same first-night's destination in Tucson. They joined our caravan on arrival day as we traveled from Albuquerque to Santa Fe.



At the campground we found the Gays, the Stevens, and the Harters. We took advantage of an early arrival to visit Taos and take several trips to the local casinos. We had a small group for our rally along with one show coach and the American Coach Service team. The Cities of Gold Hotel provided the food which was great. The ladies luncheon was in Santa Fe at Casa Sena and the casino/hotel's shuttle service provided



## ACC Pre-Rally in Canyonville, Oregon

Experience one of the "Best in RV Resorts" in the U.S., *Seven Feathers Hotel, Casino and RV Resort* in Canyonville, Oregon and join us for the ACC/FMCA pre-rally on August 5th - 8th, 2010. This will be a fun filled rally. We have lots of activities planned such as The Cow Creek Trolley Wine Tour which was a big success at the last rally we had here, golf at the Myrtle Creek Golf Course and a ladies luncheon.

## President's Message, cont.

transportation for them. They stayed in Santa Fe long enough to shop and enjoy a little of the history and architecture.

We had warm weather, cold weather, rain and even a little snow. Everyone seemed to weather the changes (no pun intended) pretty well, until the threat of a snow storm on Friday, the last full day of the rally. Fearful that the incoming storm would make for a hazardous departure on Saturday morning, the consensus from those planning to go to FMCA's convention in Albuquerque, was to make a Friday getaway. We threw together a quick caravan departure plan, contacted FMCA about our early arrival, and got the local tribal police to give us clear exit from the park out onto the highway. With about an hour and a half to put this together, we pulled up stakes, lined up, and with police assistance, headed south. Two police units gave us an escort to the Santa Fe 599 bypass. Thinking we had beat the storm, we made our way to Albuquerque. Just north of Albuquerque, we hit high crosswinds, but every coach handled it well and we made it to the holding area without incident. We had a few coaches waiting for us as they had left ahead of the caravan and we waited on a couple stragglers (one coach had critically low tire pressure on one wheel). A short time later we were parked on the Balloon Fiesta grounds where we would spend the next six days.

When the rally was over, we made our way to Oasis RV Resort in Amarillo where we spent three nights. This is a great campground if you are traveling I-40 east or west. Priced at \$20/night with the third night free, it was a great deal. Of course we had to have dinner at the Big Texan, home of the 72 oz. steak.

While there, one person (not from our group) took on the challenge to eat a 72 oz. steak plus the sides in 30 minutes. If he finished everything the meal was free. His time wasn't up when we left but it didn't look like he was going to "get 'er done".

Our goal was to get to Searcy, Arkansas for Charlie and Gloria Adcock's *Rally in the Pasture*. Annette's kidney had other plans. We headed north to Kansas City where Annette ended up having three kidney stones pulverized. The surgical procedure was called Laser Lithotripsy. The patient is doing well. The upside of getting here more than a month earlier than planned was being able to spend time with our first and only grandbaby who just turned one year old on May 8<sup>th</sup>.

Let me wrap this by saying that I hope each and every one of you will consider joining the chapter for the summer pre-rally at the beautiful *Seven Feathers RV Resort* in Canyonville, Oregon. The American Coach Service team will be there. More information on the rally, along with the registration forms, can be found in this newsletter and are available on the website for downloading or registering online. You will need to know your log-in on the ACC website to register online. If you don't know it, that's ok, just send me an email at [president@acc-fmca.com](mailto:president@acc-fmca.com) and I'll send it to you.

Have fun, travel safe, and I hope to see you in Canyonville, Oregon.

*Chip Aiken*

### PRESIDENT

CHIP AIKEN  
1160 VIERLING DR #345  
SHAKOPEE, MN 55379  
C-952.807.2290  
[president@acc-fmca.com](mailto:president@acc-fmca.com)

### VICE PRESIDENT

TONY STELLER  
790 BEAVER COURT  
DISCOVERY BAY, CA 94505  
C-209-481-5653  
[Vice-president@acc-fmca.com](mailto:Vice-president@acc-fmca.com)

### SECRETARY

ANNETTE AIKEN  
1160 VIERLING DR #345  
SHAKOPEE, MN 55379  
C-952.807.5513  
[secretary@acc-fmca.com](mailto:secretary@acc-fmca.com)

### TREASURER

SHERI TOMASZEWSKI  
P.O. BOX 17810  
FOUNTAIN HILLS, AZ 85269  
C-602-524-1690  
[treasurer@acc-fmca.com](mailto:treasurer@acc-fmca.com)

### NATIONAL DIRECTOR

BILL FERGUSON  
PMB 470  
104 RAINBOW DRIVE  
LIVINGSTON, TX 77399  
C-979.229.6107  
[nationaldirector@acc-fmca.com](mailto:nationaldirector@acc-fmca.com)

### ALTERNATE NATIONAL DIRECTOR

LINDA LAYMON  
1708 MARS HILL DR.  
WEST CARROLLTON, OH 45449  
C-801-243-6415  
[altnationaldirector@acc-fmca.com](mailto:altnationaldirector@acc-fmca.com)

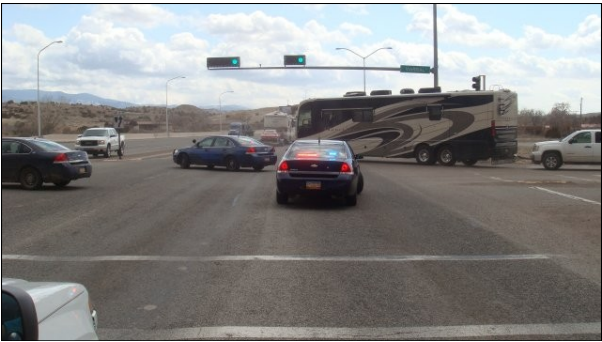
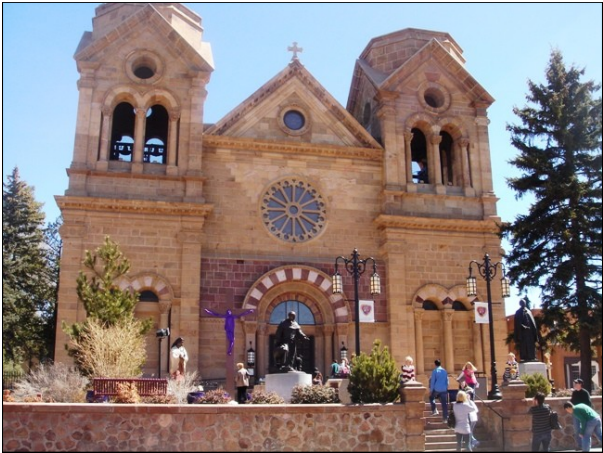
### WESTERN AREA DIRECTOR

LESLIE PETTINGER  
1919 MAIDEN LN  
OAKDALE, CA 95361  
C-209-765-6547  
[westerndirector@acc-fmca.com](mailto:westerndirector@acc-fmca.com)

### CENTRAL AREA DIRECTOR

BOB GAY  
C-785.817.6277  
[centraldirector@acc-fmca.com](mailto:centraldirector@acc-fmca.com)

Fun times in Santa Fe



# A Matter of Urgency

Did you know that the two year term for the officers and board members of this chapter are up in August?

We desperately need volunteers to step up and take the reins of this chapter. If you or someone you know might want to give back a little to the chapter to help lead it for the next two years, please contact any one of the nomination committee members.

We have an incumbent candidate for National Director and for Vice President, but we need candidates for all other positions including President, Secretary, Treasurer, Alternate National Director, Central Area Director (Bob Gay is term limited and cannot run again), Eastern

Area Director, and Western Area Director.

PLEASE consider a leadership position in your chapter!

Election of Officers will be held during the General Membership Meeting in August at the Canyonville Pre-rally.

ACC Nominating Committee:

Sheri Brewer

[sgbrewermiller@sbcglobal.net](mailto:sgbrewermiller@sbcglobal.net)

Doty Graham

[dotygraham@mchsi.com](mailto:dotygraham@mchsi.com)

Wendy Sue Holloway

[membership@acc-fmca.com](mailto:membership@acc-fmca.com)

## FMCA Benefits Changes

The Group Accidental Death and Dismemberment coverage that FMCA provides to all members has a new provider, Chartis Insurance, effective May 1, 2010. This coverage has been enhanced to include an additional paralysis benefit.

You can purchase additional accident coverage through the NEW **"FMCA Years"** Plan that will replace the "Loyal-Years" Plan some of you have purchased in past years. The Loyal-Years Plan offered AD&D insurance as well as accident hospital benefits, accident outpatient benefits and accident recuperation benefits; the amount of coverage was determined by the number of years you had been a member of FMCA. That program was cancelled by the Hartford Insurance Company, effective April 1, 2010, and you should receive notice from Hartford of non-renewal when your policy term expires. Our **"FMCA Years"** Plan will again reward you with a similar program

but with better benefits. Look for information on this program in the near future.

Another bit of good news is that the Emergency Medical Evacuation benefit (currently provided by MEDEX, which will expire on Jan. 1, 2011) is being replaced with a new and improved program that is fully funded by FMCA and can provide up to a \$109 value to you. Information about this new plan also will be forthcoming.

Finally, some of our members recently have received a confusing and inaccurate e-mail from a third party, who no longer represents FMCA, stating that the AD&D and emergency medical evacuation (MEDEX) coverage are being terminated, and that members should contact this individual. Please disregard this information. All coverage for FMCA members are being continued with no lapse in coverage.

### EASTERN AREA DIRECTOR

MARCIA BRATSBURG  
2551 TIMBER TRAIL NE  
KALKASKA, MI 49646  
C-616.340.5166  
[easterndirector@acc-fmca.com](mailto:easterndirector@acc-fmca.com)

### IMMEDIATE PAST PRESIDENT

JIM GRAHAM  
12245 SUZANNE COURT  
IRVINGTON, AL 36544  
C-251.623.4321  
[ipp@acc-fmca.com](mailto:ipp@acc-fmca.com)

### MEMBERSHIP CHAIRPERSON

WENDY SUE HOLLOWAY  
3619 CLEARWATER DR.  
LAKE HAVASU CITY, AZ 86406  
C-928-230-4080  
[membership@acc-fmca.com](mailto:membership@acc-fmca.com)

### NEWSLETTER EDITOR

JANE LIHOU  
9121 ATLANTA AVE., #637  
HUNTINGTON BEACH, CA 92646  
C- 714-749-7560  
[newslettereditor@acc-fmca.com](mailto:newslettereditor@acc-fmca.com)

### WEB SITE MANAGER

OPEN  
[webmaster@acc-fmca.com](mailto:webmaster@acc-fmca.com)

### ACC PHOTOGRAPHER

MERRITT MEDOWS  
8175 ARVILLE ST #87  
LAS VEGAS, NV 89139  
C-661.857.3332  
[gypsees@mac.com](mailto:gypsees@mac.com)

# American Coach Update from Justin Humphreys

Greetings to all ACC members from your extended family in Decatur, Indiana! American Coach hopes that everyone is out and about in your coaches and enjoying the warm spring weather.

I believe that in 2010, the RV Industry found the bottom of a dreadful market. Since January, American Coach has found our retailers gaining ground as each month passes. The growth is what I would define as small, sustainable increases. Sustainable is the key word after such a roller coaster ride this past year!

Through March, overall new diesel motor-home sales are down 6.2% over last year. Although total diesel registrations are down slightly, I am happy to report that American Coach is up with 33% more registrations thru March of this year versus March of 2009! Because we registered more coaches in a smaller market, our market share increased about 42% thru March!

It was great to see many of you at the FMCA Rally in Albuquerque, N.M., and of course at the pre-rally the week before in Santa Fe. I enjoyed catching up with everyone and receiving valuable feedback. Randy and the service crew were busy working on coaches for the two week event as well. Unfortunately, we did not sell one coach at the pre-rally or the FMCA Rally. The weather certainly did not help our cause as we had snow during both the pre-rally and the main rally! It wasn't all bad though, as we had two couples we met at the FMCA Rally buy from

their dealers two weeks later. One traded in a 2004 Mandalay on a 2010 650 horse powered Eagle and the other traded in a Beaver Marquis on a 2010 650 horse powered Heritage! These fella's love some horse power!

The factory has been doing well lately. We continue to work every week. The current production rate is six per week on the American Coach/ Revolution production line. We are gearing up for new emission engines and the chassis modifications that are required to accept the new "footprint" of these engines. We have a very limited supply of "old emission" engines which will cost tens of thousands of dollars less! Make sure you place your order today!

We have also been implementing "Lean" manufacturing into our operations. Toyota was the first company to really make an impact with this type of continuous improvement process. If you come to Decatur for service this summer, make sure you take a tour with Tom Liechty and ask him to show you some of these exciting changes. I think you will be impressed!

If you have any questions regarding our brand new 2010 models, please do not hesitate to call us at the factory- 800-854-1344. We would love the opportunity to help you find your new coach.

On behalf of 1,188 hard working families, I'd like to thank each of you for your support of our company.

Safe travels!



*"Although total diesel motor-home sales are down, American Coach is up with 33% more new coach registrations than 2009."*

# Treasurer's Report

By Sheri Tomaszewski

Both the main checking account and the CD account have been reconciled through April 30, 2010. The Balance sheet reflects moneys in our accounts as of 5/25/2010 and the Income vs. Expense Report includes entries from January 1, 2010 to May 25, 2010. I have also included a report showing income and expenses for the Santa Fe Rally. Anyone having questions regarding the Treasurer's report may contact me at 602-524-1690 or treasurer@acc-fmca.com.



## Income/Expense - YTD:2 1/1/2010 through 5/25/2010 (Cash Basis)

Category Description	1/1/2010- 5/25/2010
<b>INCOME</b>	
Membership Dues	3,431.00
Membership Fees	225.00
Other Inc-Interest	46.60
Rally Income	11,079.00
<b>TOTAL INCOME</b>	<b>14,781.60</b>
<b>EXPENSES</b>	
Administrative	1,485.91
Fees-Professional	112.50
Rally cost	8,976.98
Tax	281.90
<b>TOTAL EXPENSES</b>	<b>10,857.29</b>
<b>OVERALL TOTAL</b>	<b>3,924.31</b>

## Balance Sheet - As of 5/25/2010:3 As of 5/25/2010 (Cash Basis)

Account	5/25/2010 Balance
<b>ASSETS</b>	
<b>Cash and Bank Accounts</b>	
Flexible CD account	14,109.63
Main Account	14,519.15
Petty Cash	14.28
<b>TOTAL Cash and Bank Accounts</b>	<b>28,643.06</b>
<b>Other Assets</b>	
Undeposited Funds	0.00
<b>TOTAL Other Assets</b>	<b>0.00</b>
<b>TOTAL ASSETS</b>	<b>28,643.06</b>
<b>LIABILITIES &amp; EQUITY</b>	
<b>LIABILITIES</b>	
	<b>0.00</b>
<b>EQUITY</b>	
	<b>28,643.06</b>
<b>TOTAL LIABILITIES &amp; EQUITY</b>	<b>28,643.06</b>

## 2010-1 Santa Fe Rally 12/1/2009 through 5/22/2010 (Cash Basis)

Category Description	12/1/2009- 5/22/2010
<b>INCOME</b>	
Rally Income	
Camping	725.00
Contributions	
Fleetwood Contribution	4,000.00
<b>TOTAL Contributions</b>	<b>4,000.00</b>
Ladies Luncheon	275.00
Rally Fees	5,584.00
<b>TOTAL Rally Income</b>	<b>10,584.00</b>
<b>TOTAL INCOME</b>	<b>10,584.00</b>
<b>EXPENSES</b>	
Rally cost	
Decorating	136.02
Facility - Camping	3,112.50
Ladies Luncheon	275.00
Meals	3,440.38
Mileage	615.60
Misc	4.25
PayPal Fee-Rally	35.89
Rally Master	118.00
<b>TOTAL Rally cost</b>	<b>7,737.64</b>
Tax	
Sales Tax	271.76
<b>TOTAL Tax</b>	<b>271.76</b>
<b>TOTAL EXPENSES</b>	<b>8,009.40</b>
<b>OVERALL TOTAL</b>	<b>2,574.60</b>

# Summer Relish Recipes

## Corn Tomato Relish

3/4 cup corn, fresh is nice but not necessary  
6 ounces grape or cherry tomatoes, cut into small dice (3/4 cup)  
1/3 cup chopped red onion  
1 tablespoon chopped fresh basil  
2 teaspoons extra-virgin olive oil  
1 teaspoon red-wine vinegar



Stir together corn, tomatoes, onion, and basil. Stir in oil and vinegar and season with salt and pepper. *Serve with grilled chicken, pork chops or salmon.*

## Avocado Relish

2 ripe California avocados  
1 small vine-ripened tomato  
2/3 cup finely chopped white onion (about 1/2 onion)  
1 to 2 fresh serrano chilies  
2 tablespoons chopped fresh coriander sprigs  
2 teaspoons fresh lime juice  
1 teaspoon coarse salt  
1/2 teaspoon coarsely crushed black peppercorns



Gently mix all ingredients. Garnish with lime wedges and cilantro. *Serve immediately with chips, non-oily fish, shrimp.*

## Pineapple Papaya Relish

2 cups finely diced fresh pineapple  
1 cup finely diced fresh papaya  
1/2 cup finely diced red bell pepper  
1/2 cup finely diced Maui, Vidalia, or other sweet onion  
1 garlic clove, minced  
1 small fresh hot green chili such as a serrano or Thai chili, seeded and minced (wear rubber gloves)  
2 tablespoons shredded mint leaves



In a bowl combine all ingredients with salt to taste and let stand at room temperature 1 hour. Relish may be made 1 day ahead and chilled, covered. *Serve relish at room temperature with pork chops or grilled pork loin.*

## Seven Feathers Pre-rally, cont.

If you are traveling through Oregon before or after the rally, you might want to tour the eastern area of the state and Wallowa Lake is a great place to start. Exit Interstate 84 near LaGrande just east of Pendleton. Wallowa Lake was formed by a glacier roughly nine million years ago. Its beauty and recreational possibilities have been recognized for generations. The first hotel, restaurants and dance hall were established here in 1880. Today visitors come to fish for Kokanee and Rainbow Trout or to water ski and parasail. The Wallowa Lake Tramway climbs 3,700 feet to the summit of Mt. Howard.



If you can't live without Starbucks and your idea of roughing it is eating at a restaurant without a wine list, you will want to visit Portland. Named "America's Best Big City", Portland has gone through a revitalization in the past few years with great new restaurants, world class museums, farmer's markets and riverside parks. Check out [travelportland.com](http://travelportland.com) to plan your visit.

While you are at the *Seven Feathers RV Resort*, you are close to Harry & David (bakery, candy manufacturing, fruit packing and gift shop), Wild Life Safari, Curves and of course the Casino which features live entertainment, slots, poker, Keno, Bingo and more! The RV Resort

has free WiFi, cable TV, a fitness center, an indoor heated pool and hot tub, a gift shop along with a 24 Hour casino shuttle service. Come to Oregon and join us! Bring a friend or two and head to the Seven Feathers RV Resort in August.



*"This will be a fun-filled rally with a trolley wine tour, golfing and a ladies luncheon."*



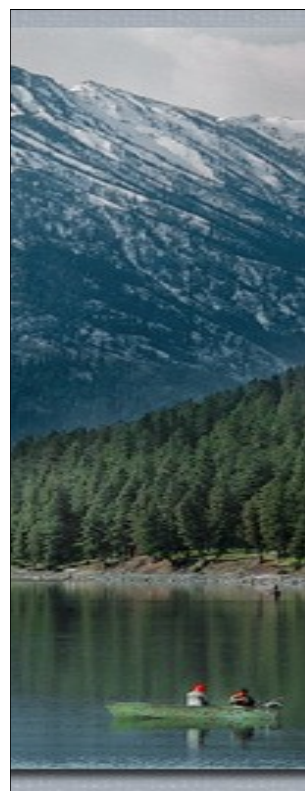
For more information contact:

Leslie Pettinger, Western Director ACC/FMCA

[Lpettinger@aol.com](mailto:Lpettinger@aol.com)

Home: 209-847-7133

Cell: 209-765-6547



# American Coach Chapter Pre-Rally

August 5<sup>th</sup> thru 8<sup>th</sup>, 2010

Seven Feathers RV Resort, Canyonville, Oregon

**Registration Deadline: July 22, 2010.** For those of you wishing to arrive early or depart later, the fee is \$30 per night. Please note on this form below (highlighted in ***bold***). **PLEASE NOTE: If you don't indicate your early arrival date on the registration and do arrive early, you may have to move multiple times during your stay.** Refunds for can-

Names of persons attending:

#1 \_\_\_\_\_ #3 \_\_\_\_\_

#2 \_\_\_\_\_ #4 \_\_\_\_\_

FMCA # \_\_\_\_\_ ACC # \_\_\_\_\_

Mailing Address

City, State, Zip Code

Phone (Home)

Phone (cell)

E-mail

Coach Yr.

Model

Length

Is this your first ACC rally? Yes \_\_\_\_\_ No \_\_\_\_\_

Are you handicapped or have special needs? \_\_\_\_\_

(For handicapped parking a copy of the handicap form must be copied and sent with payment.)

I would like to park next to: \_\_\_\_\_

Rally fee

2 people \$279 \$ \_\_\_\_\_

Rally fee

1 person \$200 \$ \_\_\_\_\_

Additional

Guests \$95 \$ \_\_\_\_\_

Non-member

Buddy coach \$279 \$ \_\_\_\_\_

FMCA # \_\_\_\_\_

Non-Member

Un-sponsored \$450 \$ \_\_\_\_\_

FMCA # \_\_\_\_\_

Children under 16 are free , except tours or golf,  
but we need a number - # \_\_\_\_\_

Golf - \$45/pp Number \_\_\_\_\_ \$ \_\_\_\_\_

Cow Creek Trolley Wine Tour

\$49/pp Number \_\_\_\_\_ \$ \_\_\_\_\_

Ladies Luncheon

\$15/pp Number \_\_\_\_\_ \$ \_\_\_\_\_

## American Coach Chapter of FMCA

### Canyonville, OR (Seven Feathers RV Resort) ACC Pre-Rally

#### American Coach Service Request

Fleetwood RV is offering to perform minor warranty repairs on your Limited, American Eagle, American Dream, American Tradition, American Allegiance or American Heritage motor home. Time available and the number of coaches in attendance will determine how much service work can be performed at the rally.

Please check in with the service representative scheduler upon arrival. He may need to coordinate your appearance while service is performed.

Please limit problems to 2 American Coach and 1 Spartan items per coach...functional items only. Painting and items that are not functional will not be addressed at rallies. This is a long-standing policy of the Service Facility. Any additional items will be on a time permitted basis.

Please explain each item in detail so we can determine whether parts are needed.

Submit this list promptly! Fleetwood must have your list at least 2 weeks before the Rally to obtain parts, and transport them to the Rally.

Repairs will be scheduled in the order received.

“Add-on” items (items added at a later date) will be added to the end of the schedule as time permits.

Chassis problems- Please note your coach type of chassis. List only the two problems. Some chassis repairs cannot be repaired at the rally. Some chassis repairs may be subject to charges to the customer.

Note... Coaches not registered, as part of the rally will not be worked upon until all rally registered coaches have been serviced.

#### **Here are some of the changes:**

- Parts and labor will be provided at no charge for in-warranty repairs. Labor will be provided at no charge for out of warranty repairs and owner will be notified of charges for parts.
- Because we are not equipped with required fall-protection at rallies, no Fleetwood associate will be allowed to get on top of a motor home roof at any time.
- No Fleetwood associate will be allowed to work under a unit at a rally.
- Repairs requiring lifting/jacking of motor home will not be performed at a rally.
- Certain repairs of doors or windows or windshields cannot be performed at a rally.
- Awning tension adjustments must be done by the awning manufacturer. This includes the replacement of awning fabric.
- Chassis repairs must be done by the chassis manufacturer.

#### **As has always been our policy, the following are some other items we cannot address at rallies:**

- Paint body repairs.
- Installing accessories
- Cosmetic/Appearance repairs.
- Water filters and maintenance services.

*Please remember that not every problem can be resolved at the Rally. Should additional work be required at a shop facility, the Service Department will assist you in determining your needs and schedule.*

Fax the repair request form to: 260-728-2951 or mail to the address on the request sheet.

# AMERICAN COACH CHAPTER OF FMCA - SERVICE REQUEST

## For American Coach Service Use Only

Group \_\_\_\_\_ Day/ Time \_\_\_\_\_ Control \_\_\_\_\_ Site # \_\_\_\_\_

**Canyonville, Oregon ACC Pre-Rally August 5 thru 8, 2010**

*Deadline For Submittal to American Coach is: July 16, 2010*

*Please read the instructions before completing form and fill in with complete numbers where indicated*

Name \_\_\_\_\_

Address \_\_\_\_\_

City \_\_\_\_\_ State \_\_\_\_\_ Zip \_\_\_\_\_

Home phone # \_\_\_\_\_ Cell # \_\_\_\_\_

Model/Year \_\_\_\_\_ Chassis VIN # \_\_\_\_\_

Coach serial # \_\_\_\_\_

I will arrive on the rally site on \_\_\_\_\_ by \_\_\_\_\_ AM \_\_\_\_\_ PM \_\_\_\_\_

**I will be going to the FMCA Convention in Redmond, OR**

**YES / NO**

(We need this information for our scheduling of work.)

(Circle One)

### **American Coach**

1 \_\_\_\_\_

\_\_\_\_\_

2 \_\_\_\_\_

\_\_\_\_\_

\_\_\_\_\_

### **Spartan**

1 \_\_\_\_\_

\_\_\_\_\_

***DO NOT SEND THIS FORM TO THE RALLY MASTER! SEND OR FAX TO THE FOLLOWING!***

**Mail to: Fleetwood RV, 1420 W. Patterson St., Decatur, IN 46733**

**Or fax to: 260-728-2951**

**Any questions about repairs call Service Center Phone # 877-735-6303**

# Become a Part of Something Fun!

## **FAQS about ACC**

**Q.** What is the difference between the ACC (American Coach Chapter of FMCA) and ACA (American Coach Association)?

**A.** All members are owners of American Coach motor homes. The ACC is a chapter of FMCA (Family Motor Coach Association) and you must be a member of FMCA. The ACC has two pre-rallies a year so they may caravan and park together at the FMCA International conventions. Members of ACA do not need to belong to FMCA and are independent from any other membership group. ACA has two national rallies a year and has eleven regional chapters.

**Q.** Can I be a member of both ACC and ACA?

**A.** Yes, most American Coach owners are members of both organizations.

**Q.** Why do I have to be a member of FMCA in order to join the ACC?

**A.** FMCA by-laws require that members of a chapter also belong to the national association.

**Q.** What are ACC's roots?

**A.** The ACC was started by ACA members that wanted to park together at FMCA events and had their first rally in Gatlinburg, TN in 1993.

**Q.** Are the officers in ACC paid?

**A.** No, they are volunteers and only out-of-pocket expenses are paid.

**Q.** Do I have to be an original owner to have the American Coach service team work on my coach at the rallies?

**A.** No, qualifying service is available to all American Coach owners attending a participating rally.

**American Coach Chapter of FMCA** consists of members that are owners of an American Coach including American Heritage, American Eagle, American Dream, American Tradition and Limited Motor Homes.

We are the only American Coach chapter of FMCA and provide our members with camaraderie with other American Coach owners. Our primary goals are to foster good relations with the American Coach manufacturing and servicing facility. We bring its management, their technicians and coach owners together.



We meet twice a year, immediately preceding each of the two international FMCA rallies. The American Coach Service Team joins us at our rallies to perform repairs on our coaches.

One or more American Coach dealers also join us to display the latest coaches, hopefully sell a few, and participate in the rallies. There is a golf tournament, a tour of nearby points of interest, many cocktail hours, dinners, pizza nights and more.



We print a quarterly newsletter with the upcoming rally information and highlights of our previous rallies. This newsletter is also available online.

Once you are a member of ACC, you will be able to join the American Coach Yahoo group where you will find valuable information about your coach and be able to ask questions about your coach. This is a fun group of American Coach owners and you will be glad you joined us.



### New Member Application

To be eligible for membership in the American Coach Chapter, you must first be a member in good standing of the FMCA. You can join FMCA online at [www.fmca.com](http://www.fmca.com) or call 800-543-3622. You must also own at least a one third interest in an American Coach Heritage, American Coach Eagle, American Coach Dream, American Coach Tradition, American Coach Allegiance or a Limited Motor Coach.

Have you ever been a member of ACC? Yes\_\_\_\_ NO\_\_\_\_ If yes, what was your member #\_\_\_\_\_

Full Name (for database)\_\_\_\_\_

Co-Pilot's full name (for database)\_\_\_\_\_

First Name: \_\_\_\_\_ Co-Pilot First Name: \_\_\_\_\_  
(For your name badge) (For your name badge)

Mailing Address: \_\_\_\_\_

City: \_\_\_\_\_ State: \_\_\_\_\_ Zip: \_\_\_\_\_

Home Phone: \_\_\_\_\_ Cell Phone: \_\_\_\_\_

2nd Cell Phone: \_\_\_\_\_ email: \_\_\_\_\_

Coach: \_\_\_\_\_ Year: \_\_\_\_\_ Length of Coach: \_\_\_\_\_ # Slides: \_\_\_\_\_

(Heritage, Eagle, Dream, Tradition, Allegiance, Limited)

FMCA Member #: \_\_\_\_\_ You must be a member of FMCA to join ACC.

***You can join FMCA online at [www.fmca.com](http://www.fmca.com) or call 800-543-3622***

***and may also join ACC online at [www.acc-fmca.com](http://www.acc-fmca.com).***

Send the completed form and a check or money order in the amount of \$33.00 (all funds to be in US dollars)

to: American Coach Chapter of FMCA , 3590 Round Bottom Rd., Cincinnati, OH 45244-3026

---

### Renewal and Change of Address Form

Check your address label. If the date has passed you are behind on your dues. ACC dues are \$18.00 for one year, \$32.00 for two years and \$42.00 for three years. You may pay your dues and make all the above changes at [www.acc-fmca.com](http://www.acc-fmca.com).

ACC member # \_\_\_\_\_ FMCA member # \_\_\_\_\_

Last Name \_\_\_\_\_ First Name \_\_\_\_\_

Co-Pilot Last Name \_\_\_\_\_ First Name \_\_\_\_\_

Address \_\_\_\_\_

City \_\_\_\_\_ State \_\_\_\_\_ Zip \_\_\_\_\_

Home Phone \_\_\_\_\_ Cell Phone \_\_\_\_\_

2nd Cell Phone \_\_\_\_\_ email \_\_\_\_\_

Coach / Year / Length \_\_\_\_\_

To renew your membership, change your address, phone number or e-mail address, fill out the form, enclose your check and mail to: American Coach Chapter of FMCA, 3590 Round Bottom RD., Cincinnati, OH 45244-3026

Note: All changes must be sent to FMCA also. You may also pay your dues and make all the above changes at [www.fmca.com](http://www.fmca.com) and [www.acc-fmca.com](http://www.acc-fmca.com).

# Future American Coach Rallies

## American Coach Chapter of FMCA Rallies

**ACC Pre-rally, August 5 - 9, 2010, Seven Feathers RV Resort, Canyonville, Ore.**

FMCA's 84th International Convention, August 11 -14, 2010, Redmond, Ore.

## ACA Rallies

ACA National Rally, Las Vegas, Nevada, October 11 - 15, 2010

Note: We are now accepting ads for the ACC newsletter. E-mail or call Chip Aiken for rates.

Wendy Sue Holloway, Membership Chairperson  
3619 Clearwater Dr.  
Lake Havasu City, AZ 86406